

A DAY IN THE LIFE OF A TIGER SAFARI

No day is ever the same when you're on safari. Whilst the daily routine may be similar, your wildlife experience will be dictated by the natural rhythms of the jungle – that's the most exciting part! Here's a short guide as to what to expect...



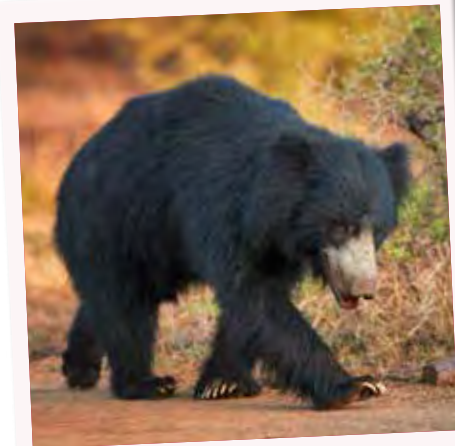
Rise and shine

DAWN

Your day will typically begin with a wake-up call before the sun rises. Freshen up and head to the lounge where a steaming mug of tea or coffee awaits before jumping aboard your jeep.

YOUR VEHICLE

Accompanied by a government naturalist, standard game drives use a Forest Department jeep on a shared basis (up to five passengers). We always use the best available naturalists and whilst they will be fully trained, be aware they may not be up to the standards you would expect in Africa. Some lodges offer premium game drives where the jeep



And Baloo's here too!



It's the real Shere Khan!

belongs to the property and has been adapted for more comfort. They seat fewer passengers and all will be fellow guests from your lodge.

Whilst a government naturalist will still be in the vehicle, you will be accompanied by the lodge's dedicated naturalist/driver – these are some of the best in the reserves. Both standard and premium game drives can be offered on a private basis. Please ask for details.

MORNING GAME DRIVE

At this magical time of day as the jungle slowly awakes, animals are often at their most active, so you'll spend the next few hours searching for wildlife while your guide brings to life the secrets of the animal kingdom. Be aware that to manage levels of disturbance to the tigers, game drive routes are assigned in advance by the authorities and are strictly adhered to, so there is little chance of variation even if tigers are spotted elsewhere in the park during your visit.

BACK AT THE LODGE

On your return it's time to enjoy a hearty breakfast. Then, depending on the facilities at your chosen place to stay, with several hours at leisure you might want to relax by the pool, indulge in a spa treatment, enjoy one of the optional activities offered by your lodge or simply catch up on your sleep. Later enjoy a laidback lunch.

AFTERNOON GAME DRIVE

Mid-afternoon, as the temperature starts to cool and predators awake from their afternoon slumbers, you'll set off on an afternoon game drive (except on Wednesdays in the Central India reserves). Whilst nothing compares



Perfect sundowner spot

to the thrill of meeting a tiger up close, they are notoriously difficult to spot and you may go on several drives without seeing one. You will however be able to discover plenty of colourful birdlife and a diverse range of smaller animals and antelope. The afternoon is also a good time to try to spot the elusive leopard and sloth bears.

EVENINGS AT THE LODGE

Join your fellow guests for pre-dinner drinks, reliving the day's captivating sightings. Evening meals are often communal, occasionally with the in-house naturalist and may be served in the main dining room or in a variety of atmospheric settings; under the stars or beside a camp fire in the cooler months. Most lodges provide wildlife presentations or short films after dinner, though many guests opt for an early night!

GAME DRIVE ESSENTIALS

Make sure you wear plenty of clothing layers as the dawn/dusk temperatures can drop considerably compared to the heat of the day. As the jeeps are open, a hat, sunglasses and sun screen are essential. A cool box with water/soft drinks and some snacks is provided on each game drive. We recommend you bring your own binoculars.

Please note All tiger reserves across India are closed Jul - Sep annually.